

Ghana

Capital city: Accra
Inhabitants: 30 Million



INSTITUTIONAL SETTING AND PURPOSE

In Ghana, the Ministry of Sanitation and Water Resources (MSWR) established in January 2017, through its Water Directorate, coordinates policies, programmes and projects on water resources management, drinking water and water-related sanitation sector. Before 2017, the water sector was part of the Ministry of Water Resources, Works and Housing, and the sanitation sector was part of the Ministry of Local Government and Rural Development.

The Water Directorate collaborates with the Water Resources Commission (WRC), the body mandated to regulate and manage water resources (including groundwater) and to coordinate government policies in relation to them. The WRC mandates data collection institutions such as the Ghana Atomic Ener-

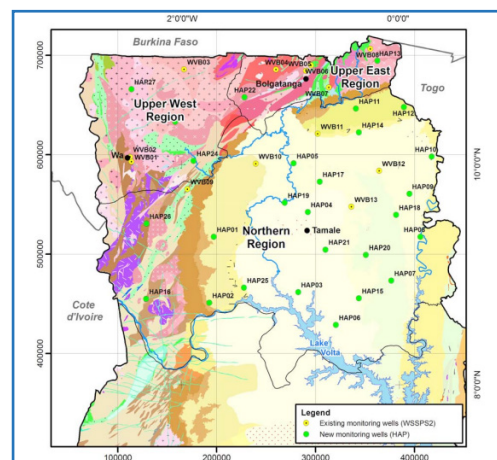
gy Commission (GAEC) and the Groundwater Division of the Council for Scientific and Industrial Research – Water Research Institute (CSIR-WRI) to undertake groundwater monitoring programs. Data and information on groundwater level and recently, data on physico-chemical parameters as well as isotopic composition of the monitoring wells in the Volta basin are collected.

The Groundwater Division of the CSIR-WRI had a number of monitoring wells in the Accra Plains which were monitored monthly for several years until it was discontinued in the late nineties due to urbanization and land disputes rendered most of the well locations inaccessible.

CHARACTERISTICS OF THE NETWORK

With the support of the CIDA-funded Hydrogeological Assessment Project of the Northern Regions of Ghana (in the Volta river basin), the Water Resources Commission has achieved the establishment of a groundwater monitoring network and information management system. Other funded projects by the Danish Development Cooperation (DANIDA) and the European Union (EU) installed groundwater monitoring wells in the Tano, Ankobra, Pra and Densu river basins. In all, a total of about seventy (70) wells are installed in the above river basins, thirty-seven (37) of which are located in the Volta basin which are currently being monitored by GAEC on behalf of the WRC.

Figure 1 – Location of the 37 new and existing monitoring wells



PROCESSING AND DISSEMINATION

The raw data of time-series groundwater level of monitoring wells are stored in Water Resources Commission hydrogeological database and are available to the general public usually by request. However, there are yearly reports for each groundwater monitoring campaign which are available at WRC. Data are also stored at CSIR-WRI.

Sources

- **Bibliographic reference:** Obuobie, E., Agyekum, W., Appiah-Adjei, E.K., Upton, K., Ó Dochartaigh, B.É. and Bellwood-Howard, I. 2018. Africa Groundwater Atlas: Hydrogeology of Ghana. British Geological Survey. Accessed 02-07-2019 - http://earthwise.bgs.ac.uk/index.php/Hydrogeologyof_Ghana;
- **Feedback from the Groundwater Division of the CSIR WRI** - received on 16-03-2020;
- **Feedback from WRC, Ghana** - received on 07-05-2020;
- **Ministry of Sanitation & Water Resources, Republic of Ghana** - <http://mswr.gov.gh/about-us/>; and
- **Water Resources Commission of Ghana** - <http://www.wrc-gh.org/about-us/>.